

RESEARCHING SOCIAL- EMOTIONAL LEARNING AT CAMP KINNERET

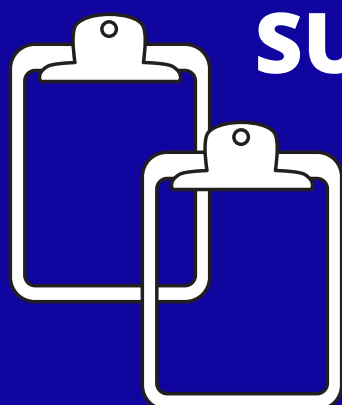
HERE'S HOW WE DID IT:

149 **CAMPERS**

between 4th-9th grade
filled out surveys
focused on their
experiences at camp



**COUNSELOR
SURVEYS**

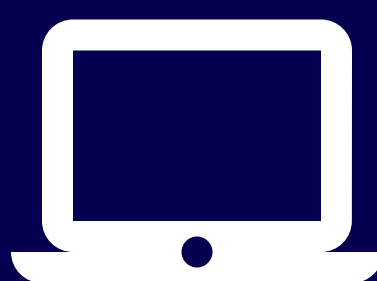


599

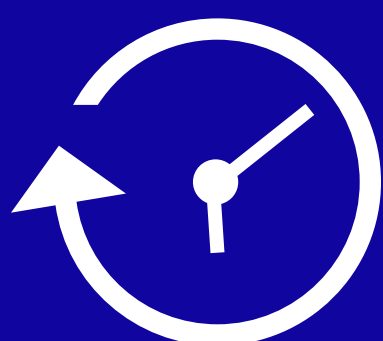
were completed,
one for every camper
from 1st - 9th grade

172 **PARENTS**

of 1st-9th grade
campers submitted
surveys online



MINUTES **1120**



were spent observing
camp activities,
assemblies, and
transportation times

TO LEARN MORE, VISIT:

campkinneret.com/researchingcamp